

**LPTENT** 

Only the experience

# 2009 10 Products

[WWW.LPTENT.COM](http://WWW.LPTENT.COM)



## SUMMARY

**ZP**

- 3 INTRODUCTION
- 4 OVERVIEW OF THE ZP SERIES
- 5 ZP DIMENSIONS AND PACK
- 6 ZP FRAME
- 7 ZP ROOF AND WALLS

**XP**

- 8 OVERVIEW OF THE XP SERIES
- 9 XP DIMENSIONS AND PACK
- 10 XP FRAME
- 11 XP ROOF AND WALLS

**S**

- 12 OVERVIEW OF THE S SERIES
- 13 S DIMENSIONS AND PACK
- 14 S FRAME
- 15 S ROOF AND WALLS

**ECO**

- 16 OVERVIEW OF THE ECO SERIES
- 17 ECO DIMENSIONS AND PACK
- 18 ECO FRAME
- 19 ECO ROOF AND WALLS
- 20-21 ACCESSORIES

- 22 CUSTOMISATION AND BRANDING
- 23 COMMUNICATION MEDIA
- 24 LPTENT & EVENTS

- 25 EXISTING CUSTOMERS
- 25 PATENTS AND CERTIFICATES
- 26 LPTENT WORLDWIDE

*With thirty years of experience in the field of tents, public and industrial shelters, the founder of the LP Tent company has the pleasure of presenting you with his new range of products.*

30 years of experience and expertise in the field of construction and rental of mobile public and industrial shelters has enabled us to combine the technical elements required to develop various product ranges which we are happy to present to you today.

We used innovative and patented systems and high quality materials to design our tents. Set up and de-rigging can take as little as 60 seconds for all the products that appear in the catalogue. See the explanatory leaflet below with a quick description of our 4 ranges of products to assist you with your choice.

### The **ZP** Series

Is for daily use by all public events professionals or for near-permanent use\*.

### The **XP** Series

Is designed for intensive use, it is designed for a wide range of uses both indoor and outdoor. Semi-permanent use.

### The **S** Series

It is suitable for general use, perfect for communities or Individuals and represents excellent value for money.

### The **ECO** Series

The eco series is probably the best adapted for occasional social and family use.

\*1-4 months according to the climatic conditions and correct anchorage.



## OVERVIEW OF THE ZP SERIES

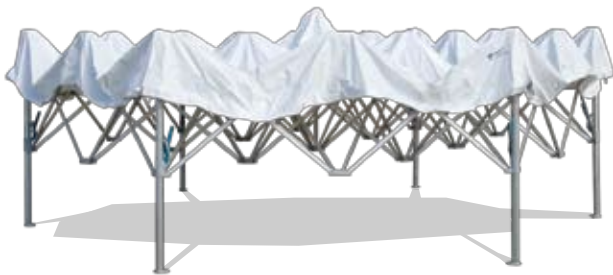
**1** The ZP range is a range of tents specially designed to accommodate the most demanding of users. These models feature all the characteristics of a structure designed for instant deployment but now adapted for use in near permanent settings.



**2** These folding structures combine technical advancement, safety, and aestheticism. They appeal to professionals because they are easy to use, can be quickly set up and are strong and long lasting.



**3** Full anodized aluminium structure, cable tension system, injected fibre glass connector piece, stainless steel bolts, 380 gr/m<sup>2</sup> PVC fabric. European safety standard EN 13782, standard CTS according to NV 1965 (snow and wind), M2 fire-resistant fabric according to standard NF P 92503, 5 year guarantee, Wind resistance: 100 km/h with adequate anchorage.



Event version



**4** The advantages:  
Use in extreme conditions,  
5 year guarantee,  
European Safety Standard accreditation,  
Fire-resistant fabric,  
Maximum mechanical stability,  
Easy locking of the corners,  
Sliding walls,  
Strings + injected pieces  
Wind resistance: 100 km/h (with correct anchorage).

60 SECONDE SET UP!



## ZP DIMENSIONS AND PACK

### — ZP RANGE SPECIFICATIONS —

1



ZP330  
**3x3 m**

Tent dimension : 3x3m / Weight : 43,50 kg / Height of the Peak : 3,60m /  
Dimensions when folded : 1,60x0,36x0,36 / Ridge height : Min 1,97m Max 2,20m /  
Number of legs : 4 / Number of Peaks : 1 / Surface : 9m<sup>2</sup> /



ZP440  
**4x4 m**

Tent dimension : 4x4m / Weight : 54,5 kg / Height of the Peak : 3,60m /  
Dimensions when folded : 2,01x0,34x0,34 / Ridge height : Min 1,97m Max 2,20m /  
Number of legs : 4 / Number of Peaks : 1 / Surface : 16m<sup>2</sup> /



ZP5HEXA Ø5m  
**5x5 m**

Tent dimension : 5m hexa / Weight : 85 kg / Height of the Peak : 3,60m /  
Dimensions when folded : 1,52x0,61x0,45 / Ridge height : Min 1,97m Max 2,20m /  
Number of legs : 6 / Number of Peaks : 1 / Surface : 16,5m<sup>2</sup> /



ZP6HEXA Ø6m  
**6x6 m**

Tent dimension : 6m hexa / Weight : 97 kg / Height of the Peak : 3,60m /  
Dimensions when folded : 1,62x0,73x0,80 / Ridge height : Min 1,97m Max 2,20m /  
Number of legs : 6 / Number of Peaks : 1 / Surface : 24m<sup>2</sup> /

### — ZP FABRICS —

2

RAL 9016

RAL 1023

RAL 9011

RAL 1015

RAL Coca Cola

RAL 6005

RAL 5007

RAL 7042

This flexible, resistant 380 GR M<sup>2</sup> PVC fabric, which is M2 fire-resistant in compliance with standard NF P 92503, has a unique design. It is treated for ultra violet protection and a lacquered finish ensures its longevity. Identified LPTEN<sup>®</sup> M2 fabric.



- ultra violet protection - anti mildew - anti rot - anti salt  
Available colours: white, blue, grey, other colours by special order.

Technical information :  
380 gr/m<sup>2</sup>  
Fabric 550 DTEX  
Resistance -30° + 70°C  
Double side coating  
Double side lacquer  
Standards EN 15619

3

### — ZP PACK CONTENTS —

### — ZP SPECIAL —

4

#### Frame + Top



#### Carrying Bag



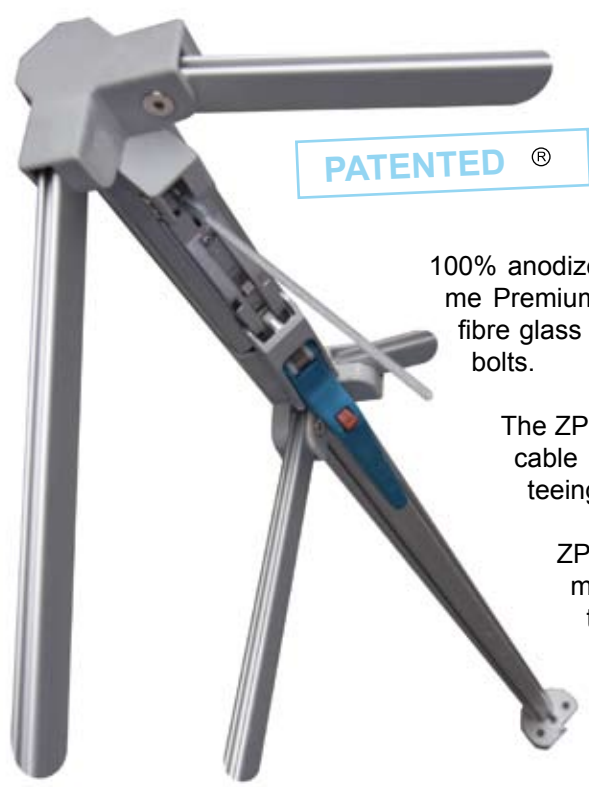
ZP system with a sliding wall in the upper section; it is possible to slide the wall without removing it creating a curtain effect.





## ZP FRAME

Self-blocking corner system, and easy automatic locking. Cable tension system and maximum stability.

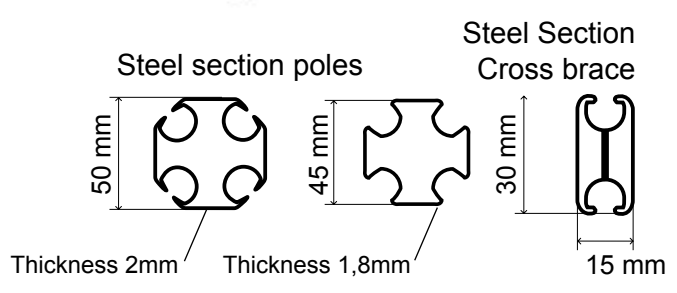


**PATENTED** ®

100% anodized aluminium ZP series frame Premium quality EN 573 6060, injected fibre glass connector pieces stainless steel bolts.

The ZP frame has an integrated tension cable that is self-stabilizing, guaranteeing maximum stability.

ZP steel section with grooves that make it extremely resistant to twisting related to assembly, bad weather, or wind.



Alu Bracket + ZP Lever System

Cable tension

Profile

Scissors

Connector

Foot plate

	ZP	XP	S	ECO
Use	Daily, almost permanent	Daily, semi-permanent	Regular	Occasional
Guarantee	5 years	5 years	2 years	1 year
Accreditation Standard	EN 13782	EN 13782	EN 13782	98/6/CE
Material	Alu/PVC/fibre glass	Alu/PVC/fibre glass	Alu/PVC/fibre glass	metal/nylon PVC
Wind Resistance	100 km/h	+95 km/h anchorage or ballasting comply with regulations	+70 km/h	+50 km/h

# ZP ROOF AND WALLS

## ZP WALL OPTIONS

1

### Blank wall

*Completely opaque.*  
Dimensions of the walls:  
2,5m / 3m / 4m.



### Semi-panoramic wall and encased curtain

Dimensions of the walls:  
2,5m / 3m / 4m.



### Medium-height wall

*Upper section can be hidden.*  
Dimensions of the walls:  
2,5m / 3m / 4m.

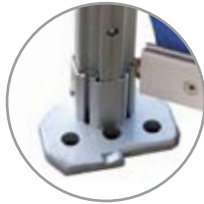


### French window-wall

Dimensions of the walls:  
2,5m / 3m / 4m.



All ZP walls feature a horizontal Keder at foot level, this allows our ground-bar to hold the wall in position at the bottom and clips into the feet giving greater stability and less billowing.



### Door wall

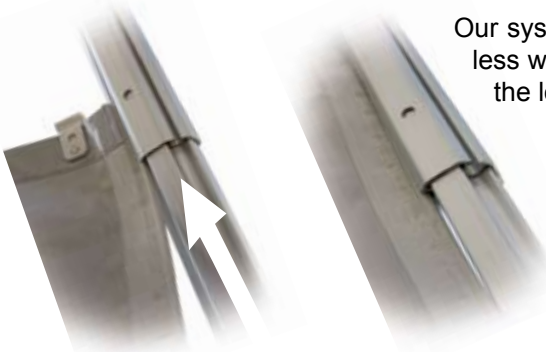
*Central DOOR fastener passage of 1 m 10.*  
Dimensions of the walls:  
2,5m / 3m / 4m.



## ZP RANGE SIDE WALL ATTACHEMENT

2

Our system of assembling walls by keder rails provides optimum tension and less wind effect. Walls are secured to the upper leg using a keder rail and to the lower leg by utilising a sliding rod and clamp for a weatherproof seal.



100% airtight  
100% watertight  
Stretched wall  
Reduced wind effect  
Sliding wall

## ZP ROOF FEATURES

3

Double layer PVC and strap on the cross brace.



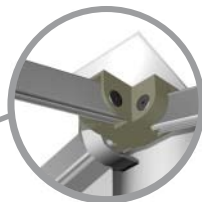
Sliding Wall.



Keder rails on the upper section.



Double layer PVC on the spike crimped, taped seams.



Double layer PVC and strap on each corner.





## OVERVIEW OF THE XP SERIES

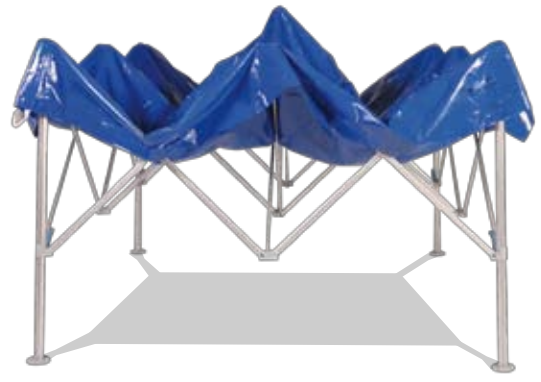
1 The XP series is for professionals who have a daily requirement to shelter areas very rapidly.



2 The tents are recommended for intensive use and comply with all the relevant safety standards.



3 Full anodized aluminium structure, injected fibre glass connector piece, stainless steel bolts, 380 gr/m<sup>2</sup> PVC fabric. European safety standard EN 13782, standard CTS according to NV 1965 (snow and wind), M2 fire-resistant fabric according to standard NF P 92503, 5 year guarantee, Wind resistance: +95km/h with adequate anchorage.



4 The advantages:  
Intensive use,  
5 year guarantee,  
European Safety Standards,  
Fire-resistant fabric.  
Sliding walls with ties  
Wind resistance: + 95 km/h  
(with anchorage).

60 SECONDES  
SET UP !



# XP DIMENSIONS AND PACK

## XP RANGE SPECIFICATIONS

1



XP220  
**2x2 m**

Tent dimension : 2x2m / Weight : 13 kg / Height of the Peak : 3,15m /  
Dimensions when folded : 1,52x0,25x0,25 / Ridge height : Min 1,9m Max 2,05m /  
Number of legs : 4 / Number of Peaks : 1 / Surface : 4m<sup>2</sup> /



XP330  
**3x3 m**

Tent dimension : 3x3m / Weight : 27,5 kg / Height of the Peak : 3,15m /  
Dimensions when folded : 1,52x0,31x0,31 / Ridge height : Min 1,9m Max 2,05m /  
Number of legs : 4 / Number of Peaks : 1 / Surface : 9m<sup>2</sup> /



XP345  
**3x4,5 m**

Tent dimension : 3x4,5m / Weight : 38 kg / Height of the Peak : 3,15m /  
Dimensions when folded : 1,52x0,31x0,4 / Ridge height : Min 1,9m Max 2,05m /  
Number of legs : 4 / Number of Peaks : 2 / Surface : 13,5m<sup>2</sup> /



XP360  
**3x6 m**

Tent dimension : 3x6m / Weight : 51,5 kg / Height of the Peak : 3,15m /  
Dimensions when folded : 1,52x0,31x0,5 / Ridge height : Min 1,9m Max 2,05m /  
Number of legs : 6 / Number of Peaks : 2 / Surface : 18m<sup>2</sup> /

## XP FABRICS

2

RAL 9016

RAL 1023

RAL 9011

RAL 1015

RAL Coca Cola

RAL 6005

RAL 5007

RAL 7042

This flexible, resistant 380 GR M<sup>2</sup> PVC fabric, which is M2 fire-resistant in compliance with standard NF P 92503, has a unique design. It is treated for ultra violet protection and a lacquered finish ensures its longevity. Identified LPTENT<sup>®</sup> M2 fabric.



- ultra violet protection - anti mildew - anti rot - anti salt

Technical information :  
380 gr/m<sup>2</sup>  
Fabric 550 DTEX  
Resistance -30° + 70°C  
Double side coating  
Double side lacquer  
Standards EN 15619

## XP PACK CONTENTS

3

Frame + Top



Bag with retractable wheels



Guying kit



Wall bag (optional walls).





## XP FRAME

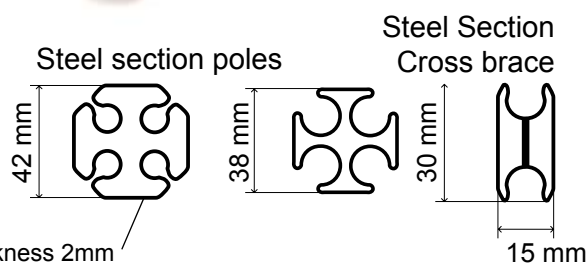
Injected corner lever to facilitate assembly, as well as an aluminium cover for optimum roof tension.



**PATENTED** ®

100% EN anodized aluminium XP series frame Premium quality 573 6060, injected fibre glass connector piece, stainless steel bolts.

The XP steel sections have grooves which provide extreme resistance to twisting resulting from assembly, bad weather, or the wind.



	ZP	XP	S	ECO
Use	Daily, almost permanent	Daily, semi-permanent	Regular	Occasional
Guarantee	5 years	5 years	2 years	1 year
Accreditation Standard	EN 13782	EN 13782	EN 13782	98/6/CE
Material	Alu/PVC/fibre glass	Alu/PVC/fibre glass	Alu/PVC/fibre glass	metal/nylon PVC
Wind Resistance	100 km/h	+95 km/h	+70 km/h	+50 km/h
		anchorage or ballasting comply with regulations		

Alu Bracket

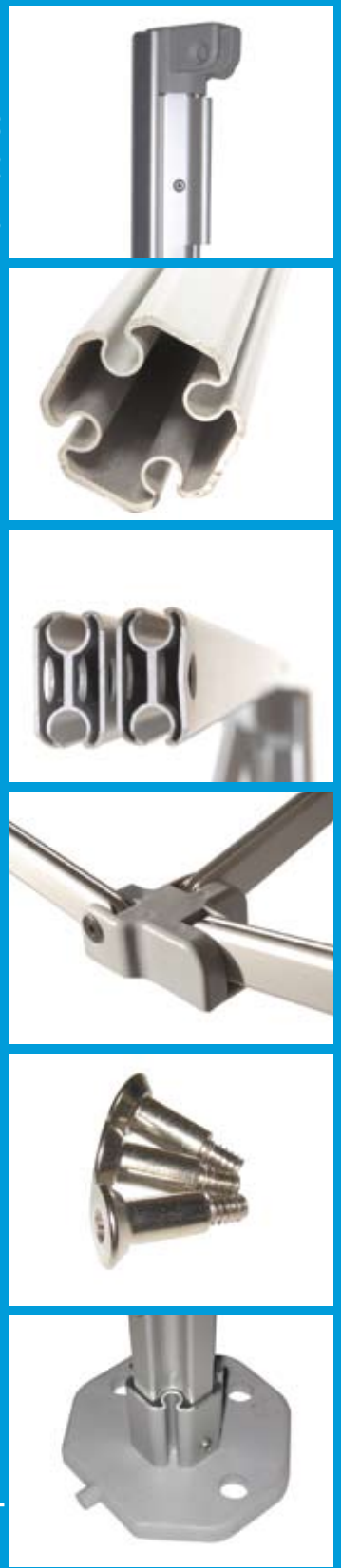
Profile

Scissors

Connector

Screws and bolts

Foot plate



# XP ROOF AND WALLS

## XP WALL OPTIONS

Blank wall

*Completely opaque.*  
Dimensions of the walls:  
2,5m / 3m / 4m.



Semi-panoramic wall and encased curtain

Dimensions of the walls:  
2,5m / 3m / 4m.



Medium-height wall

*Upper section can be hidden.*  
Dimensions of the walls:  
2,5m / 3m / 4m.



Door wall

*Central DOOR fastener passage of 1 m 10.*  
Dimensions of the walls:  
2,5m / 3m / 4m.



All XP walls feature a horizontal Keder at foot level this allows our ground-bar to hold the wall in position at the bottom and clips into the feet giving greater stability and less billowing.



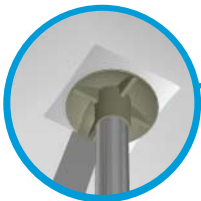
## XP RANGE SIDE WALL ATTACHEMENT

Our system of assembling walls by sliding keder rails provides optimum tension and less wind effect. The keder slides to the interior of the pole with a Velcro grip finishing on the lower section.

100% airtight,  
100% watertight,  
Stretched wall,  
Reduced wind effect,

## XP ROOF FEATURES

Keder rails on the upper section.



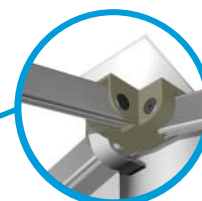
Double layer PVC and strap on the cross brace.



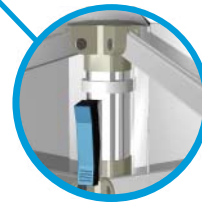
Velcro 50mm.



Double layer PVC on the spike crimped, taped seams.



Double layer PVC and strap on each corner.





## OVERVIEW OF THE S SERIES

- 1** The S series is perfect for communities and individuals (CTS standards) and features simple set up, solid build quality and effective use.



- 2** The tents are recommended for regular use, they comply with all the relevant safety standards.



- 3** Full anodized aluminium structure, injected fibre glass connector piece, stainless steel bolts, 380 gr/m<sup>2</sup> PVC fabric. European safety standard EN 13782, standard CTS according to NV 1965 (snow and wind), M2 fire-resistant fabric according to standard NF P 92503, 2 year guarantee, Wind resistance: 70km/h with adequate stowage.



- 4** The advantages:  
Regular use,  
2 year guarantee,  
European Safety Standards,  
Fire-resistant fabric,  
Wind resistance: + 70 km/h  
(with anchorage).

60 SECONDE SET UP!



## S DIMENSIONS AND PACK

### S RANGE SPECIFICATIONS

1



S330  
**3 x 3 m**

Tent dimension : 3x3m / Weight : 25,5 kg / Height of the Peak : 3,15m /  
Dimensions when folded : 1,52x0,31x0,31 / Ridge height : Min 1,8m Max 2m /  
Number of legs : 4 / Number of Peaks : 1 / Surface : 9m<sup>2</sup> /



S345  
**3 x 4,5 m**

Tent dimension : 3x4,5m / Weight : 34 kg / Height of the Peak : 3,15m /  
Dimensions when folded : 1,52x0,31x0,48 / Ridge height : Min 1,8m Max 2m /  
Number of legs : 4 / Number of Peaks : 2 / Surface : 13,5m<sup>2</sup> /



S360  
**3 x 6 m**

Tent dimension : 3x6m / Weight : 43 kg / Height of the Peak : 3,15m /  
Dimensions when folded : 1,52x0,31x0,55 / Ridge height : Min 1,8m Max 2m /  
Number of legs : 6 / Number of Peaks : 2 / Surface : 18m<sup>2</sup> /

### S FABRICS

2

RAL 9016

RAL 1023

RAL 9011

RAL 1015

RAL Coca Cola

RAL 6005

RAL 5007

RAL 7042

This flexible, resistant 380 GR M<sup>2</sup> PVC fabric, which is M2 fire-resistant in compliance with standard NF P 92503, has a unique design. It is treated for ultra violet protection and a lacquered finish ensures its longevity. Identified LPTENT<sup>®</sup> M2 fabric.



- ultra violet protection - anti mildew - anti rot - anti salt  
Available colours: white, other colours by special order.

Technical information :  
380 gr/m<sup>2</sup>  
Fabric 550 DTEX  
Resistance -30° + 70°C  
Double side coating  
Double side lacquer  
Standards EN 15619

3

### S PACK CONTENTS

### SPECIAL S POLYESTER

4

Frame + Top

Simple carrying bag

Guying kit



The S series is also available with a polyester top and sidewalls

## S FRAME

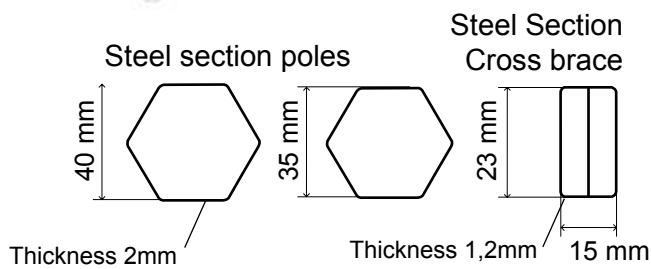
Set up by simple pressure for optimum roof tension.



100% anodized aluminium S series frame EN 573 6060, injected fibre glass connector piece, stainless steel bolts.

40 mm S steel section provides very good resistance to twisting related to assembly, bad weather, or wind.

Connector with double footing maintains the strength of the cross braces.



	ZP	XP	S	ECO
<b>Use</b>	Daily, almost permanent	Daily, semi-permanent	Regular	Occasional
<b>Guarantee</b>	5 years	5 years	2 years	1 years
<b>Accreditation Standard</b>	EN 13782	EN 13782	EN 13782	98/6/CE
<b>Material</b>	Alu/PVC/fibre glass	Alu/PVC/fibre glass	Alu/PVC/fibre glass	metal/nylon PVC
<b>Wind Resistance</b>	100 km/h	+95 km/h	+70 km/h	+50 km/h
		anchorage or ballasting comply with regulations		

Alu Bracket



Profile



Scissors



Connector



Screws and bolts



Foot plate



# S ROOF AND WALLS

## S WALL OPTIONS

1

Blank wall

Completely opaque.  
Dimensions of the walls:  
2,5m / 3m / 4m.



Semi-panoramic wall  
and encased curtain

Dimensions of the walls:  
2,5m / 3m / 4m.



Door wall

Central DOOR fastener  
passage of 1 m 10.  
Dimensions of the walls:  
2,5m / 3m / 4m.



## S RANGE SIDE WALL ATTACHEMENT

2

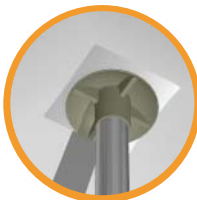


Walls are attached to the roof using 50mm Velcro, to the legs using 50mm Velcro tabs and to each other using fold over flaps with 50mm Velcro. Half wall with window and encased curtain

## S ROOF FEATURES

3

Keder rails on  
the upper section.



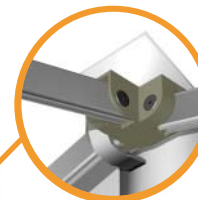
Double layer PVC  
and strap on the  
cross brace.



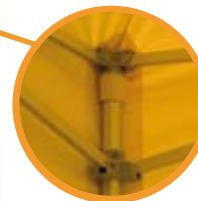
Velcro 50mm.



Double layer PVC on  
the spike crimped,  
taped seams.



Double layer PVC and  
strap on each corner.





## OVERVIEW OF THE ECO SERIES

**1** The ECO series is for use in a family setting, it is sold with a complete set of side walls as standard.



**2** These tents are recommended for occasional and average intensity use.



**3** Metal alloy structure, anti-rust epoxy painting, injected nylon connector piece steel bolts, single side nylon polyester 300 gr/m<sup>2</sup> PVC coated fabric. Low flammability, UV protection, 100% airtight fabric. Wind resistance: +50 km/h with adequate anchorage.



**4** Advantages of the Eco pack :  
Exceptional value for money  
In conformance with directive 98/6/CE  
Low flammability fabric  
Wind resistance: + 50 km/h  
(with stowage).

60 SECONDE SET UP!



## ECO DIMENSIONS AND PACK

### ECO RANGE SPECIFICATIONS

1



ECO330  
**3x3 m**

Tent dimension : 3x3m / Weight : 28 kg / Height of the Peak : 3,15m /  
Dimensions when folded : 1,52x0,25x0,25 / Ridge height : Min 2m Max 2,3m /  
Nombre de pieds : 4 / Number of Peaks : 1 / Surface : 9m<sup>2</sup> /



ECO345  
**3x4,5 m**

Tent dimension : 3x4,5m / Weight : 37 kg / Height of the Peak : 3,15m /  
Dimensions when folded : 1,52x0,31x0,4 / Ridge height : Min 2m Max 2,3m /  
Nombre de pieds : 4 / Number of Peaks : 2 / Surface : 13,5m<sup>2</sup> /



ECO360  
**3x6 m**

Tent dimension : 3x6m / Weight : 50 kg / Height of the Peak : 3,15m /  
Dimensions when folded : 1,52x0,31x0,5 / Ridge height : Min 2m Max 2,3m /  
Nombre de pieds : 6 / Number of Peaks : 2 / Surface : 18m<sup>2</sup> /

### ECO FABRICS

2

RAL 9016

Single side flexible resistant nylon polyester 300 gr/m<sup>2</sup> PVC coated fabric, low flammability, UV protection, 100% airtight.

RAL 6036

Available colours, White, blue, green.

RAL 5010



### ECO PACK CONTENTS

3

Frame + Top



Polyester carrying bag



Guying kit



Wall Bag + 3 Blank walls + 1 Door wall.





## ECO FRAME

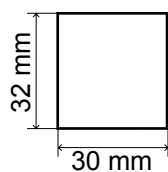
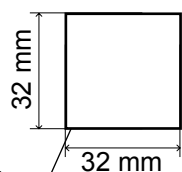
Easy corner locking system pull pin joints.



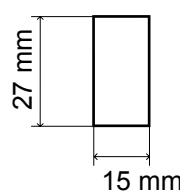
ECO series frame in metal alloy anti-rust epoxy painting, nylon connector.

Injected nylon connector piece, steel bolts ECO steel section with stoved epoxy painting, planished appearance.

Steel section poles



Steel Section Cross brace



Thickness 1,5mm

	ZP	XP	S	ECO
Use	Daily, almost permanent	Daily, semi-permanent	Regular	Occasional
Guarantee	5 years	5 years	2 years	1 years
Accreditation Standard	EN 13782	EN 13782	EN 13782	98/6/CE
Material	Alu/PVC/fibre glass	Alu/PVC/fibre glass	Alu/PVC/fibre glass	metal/nylon PVC
Wind Resistance	100 km/h	+95 km/h	+70 km/h	+50 km/h
		anchorage or ballasting comply with regulations		

Leg top joint



Profile



Scissors



Connector



Screws and bolts



Foot plate



# ECO ROOF AND WALLS

## ECO WALL OPTIONS

1



ECO330  
**3 x 3 m**

The walls are included with the tent as below :

Three 3 m blank walls + one 3 m left wall with a door, width of door: 1 m.



ECO345  
**3 x 4,5 m**

Two 4 m 50 blank walls + one 3 m blank wall  
+ one 3 m wall with a door, door width: 1 m.



ECO360  
**3 x 6 m**

Five 3 m blank walls + one 3 m wall with a door, door width: 1m.

## ECO RANGE SIDE WALL ATTACHEMENT

2

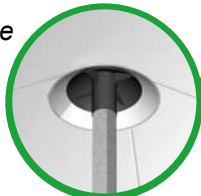
The walls are attached to the roof with 10 cm Velcro bands and between the walls with 10 cm Velcro bands, attachment around the poles with 5 cm Velcro bands.



## ECO ROOF FEATURES

3

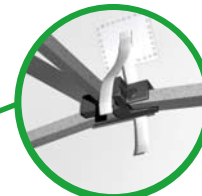
*Backing on the spike  
Crimped, taped  
seams.*



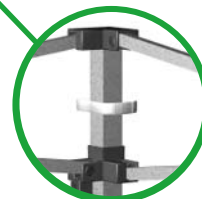
*Velcro 50mm.*



*Backing and strap on  
the cross brace.*



*Backing and strap on  
each corner.*





## ACCESSORIES



### ZP XP S ECO Folding table

Folding table, for all the ranges 100% aluminium folding table, polypropylene folding tray with PVC storage bag. width: 40 cm height: 85 cm length: 1m or 2m



### ZP XP Pro ballasting

Allows fixing of several legs when the tents are assembled. Up to 4 legs can be attached to the same weight. Recommended for general use. Weight: 15 kg.



### ZP XP S ECO Simple ballasting

May be used as additional for the ZP & XP and as a stand-alone weight for the S & Eco Weight: 15 kg.



### ZP XP Stretcher bar

Aluminium bar used to fix half walls to the frame or allow connection of the legs and lower wall at ground level. Gives greater stability in windy conditions and is recommended for general use. Supplied with a zipped carrying bag. Available in the following sizes (2 m, 3 m, 4 m, 4.5 m).



### ZP XP S ECO Gutter

The gutter ensures the water tightness of the space between 2 tents. The dimensions are selected according to the size of the tents (2 m, 3 m, 4 m, 4.5 m, 6 m).



### ZP XP S ECO Rigid connection

The rigid connector allows 2 tents to be connected using the outer track on the legs giving a secure and stable connection.



### ZP XP PVC connection

PVC connection for a perfect aesthetic finish, enables compensation for the water tightness between two tents and can be installed with the metal separators.



### ZP Carrying bag with reinforced trolley

The ZP case consists of a trolley combined with a thick PVC storage bag supported by straps. Dimensions: 3 x 3, 4 x 4, 5 x 5, 6 m hexagonal.



### ZP XP Carrying bag with retractile wheels

Padded case on wheels with storage pockets, ergonomic handles which make transporting easy. Dimensions: 2 x 2, 3 x 3, 3 x 4.50, 3 x 6.



### ZP XP S ECO Simple carrying bag

PVC transport cover with a handle and storage pockets. Dimensions: 2 x 2, 3 x 3, 3 x 4.50, 3 x 6.



**ZP XP S EGO** Guying kit

Additional guying kit for ground with low pullout density / 4 pegs / 4 straps / 4 clevises.



**ZP XP S EGO** Sun cover

For a perfect aesthetic appearance. 2 x 2, 3 x 3, 4 x 4, 5 x 5, 3 x 4.5, 3 x 6 6m Hexa 700 gr/m2 PVC fabric with eyelets every 40 cm, Colour, Blue or Grey, delivered with carrying bag.



**ZP XP S EGO** 1 x 150 watts interior spotlight

Multi-directional 150 watts spotlight attached to the frame. Delivered with a carrying bag when two units are ordered.



**ZP XP S EGO** 4 x 150 watts interior spotlight

To be placed on the centre of the peak pole. The four spotlights can be directed individually. Delivered with a padded carrying bag.



**ZP XP S EGO** 1 x 150 watts exterior spotlight

Multi-directional spotlight attached to a pole for exterior lighting. Delivered with a carrying bag when two units are ordered.



**ZP XP S EGO** 1,300 watts heating system

Heating system to be fixed to the mast of the tent. 1,300 watts of immediate heat.



**ZP XP S EGO** 2,000 watts heating system

Heating system to be fixed to the mast of the tent. 2,000 watts of immediate heat.



**ZP XP** Flag stand

Enables fixing of a flag directly to the frame. for a dynamic look.



**ZP XP S** Counter

Aluminium counter with a tray 35 cm wide, delivered with a skirt and a carrying bag. Dimensions: 2 m, 3 m, 4 m 50, 4 m, Quick assembly.



**ZP XP S EGO** Cord lead

Cable tidy kit – clips over the frame to direct and hide cables.



**ZP** High wind anchoring

High wind anchoring plate fixation with 60 cm pegs. Kit with 4 or 6 pegs, 4 or 6 plates, and 2 or 4 sets of resistance cables.



## CUSTOMISATION AND BRANDING

1

### LETTERING



You choose the size of the letters, the colour and the type font.

The roof as well as the interior or exterior walls of the tent can be personalised with a maximum size of 50 cm for the letters, the band can be personalised with a maximum size of 20 cm.

2

### LOGO PRINTING



Printing of logos in 1, 2, 3 and four colours. The entire tent can be personalised. Maximum height of the logo for the roof and walls: 1m, for the band: 20 cm, No limit for the width.

3

### FULL COLOUR FLOOD PRINTING



Complete printing of a wall or roof.

For all additional information please contact us. Please send your files in AI or EPS vector format. A 3D model will be sent to you for approval.

1

THE FLAGS

THE SURFS

2

Flags and surfs are delivered with the mast, the banner, and the base.



3

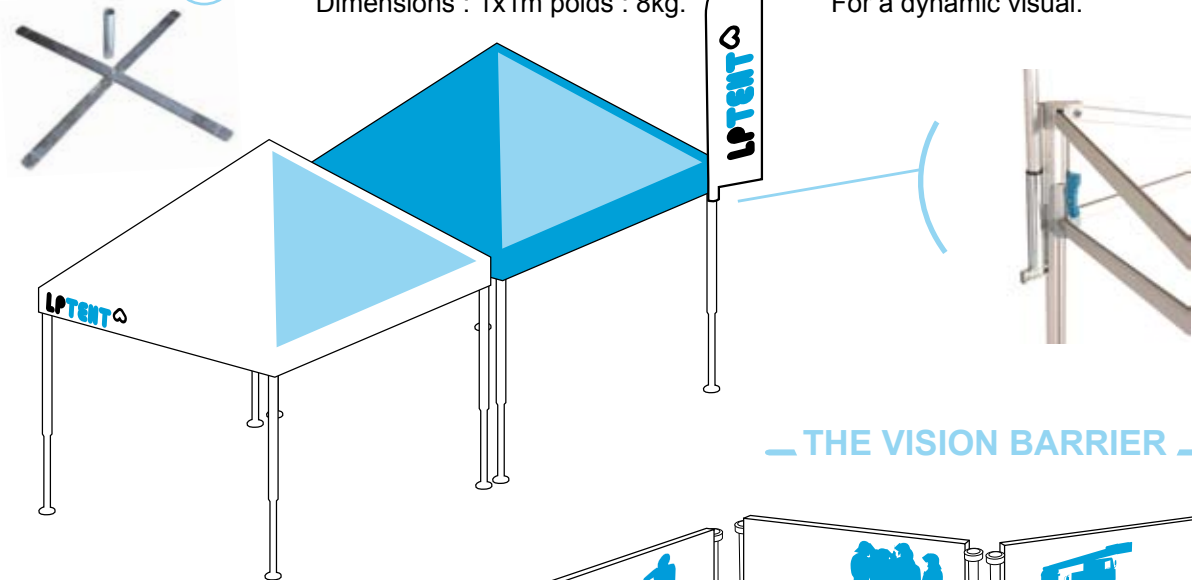
FLAG AND SURF STANDS

Dimensions : 1x1m poids : 8kg.

THE FLAG STAND

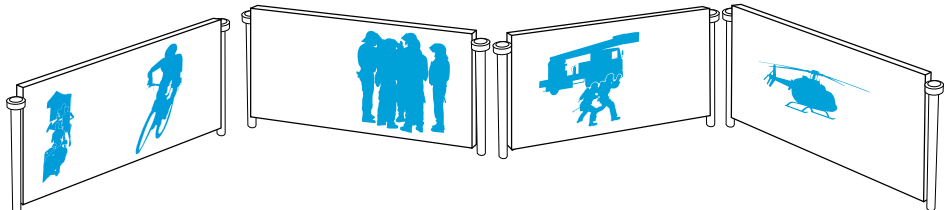
For a dynamic visual.

4



THE VISION BARRIER

5



'FLAG' and 'SURF' banners are manufactured with 28 mm aluminium tubes, 1.5 mm thick which fit together with a fibre glass rod of 6 or 4 mm on the end. The finishing of the banner is done with a black elastic strap.

The Vision barrier can be entirely personalised. Quick assembly and the barriers can be fitted together ad infinitum. It is delivered with its full aluminium printed fabric. Height: 80 cm, Width: 2 m Weight: 6 kg



## LPTENT & EVENTS

A few events connected to our different ranges of products.



## EXISTING CUSTOMERS

1



- Peugeot
- Renault
- Citroën

- Suzuki
- Honda
- Yamaha

- The Army
- SDIS France
- The Airports of Lyon, Paris etc...

- Airbus
- Bnp paribas
- The Town Halls of France, Espagne, UK, Belgique, Allemagne, Autriche, etc..
- The embassies of the USA, Italie, Luxembourg etc...

## PATENTS AND CERTIFICATES

2

Some of our tents have unique patented technical components for which a patent request has been submitted.

A technical report has been made on the mechanical stability of the frame of our tents. The ZP, XP, and S ranges are in conformance with the strictest European safety standards and can probably be approved worldwide according to standard CE below.

European safety standard EN 13782

Standard CTS according to NV 1965 (snow and wind)

Fire-resistant fabric,

- |                |                        |
|----------------|------------------------|
| France         | - M2 normes NF P 92503 |
| Germany        | - B1 DIN 4102          |
| United Kingdom | - BS 476SRIES          |
| Spain          | - M2 UNE 23727 : 1990  |

Certificates: anti-fire – Technical stability – Manufacturing certificate, manufacturer's certificate. Available from your manufacturer.

**LP TENT** 

Only the experience •

**WWW.LPTENT.COM**

